



GEODE

CURTAIN WALLING SUITE

Inspired façade solutions. Innovations in curtain walling technology and the widest range of design options from a single grid system, for unparalleled aesthetic variation and performance excellence.



GEODE

A Complete Curtain Walling Suite

Geode MX is a complete curtain walling suite, offering specifiers enhanced thermal performance to meet the most stringent Building Regulations, and the widest choice of aesthetic options from a single system.

A variety of curtain wall applications are available using the same transom and mullion grid, giving specifiers the opportunity to vary the appearance of the building envelope, with all the design and construction benefits of one fully integrated system.





Combining aesthetics with functionality

The MX system successfully balances the creative and visual requirements of architects with the functional needs of contractors, developers and occupiers, simplifying specification, fabrication and installation to ensure the highest quality and cost efficiency.

Designers also have the benefit of consistent sight lines and interfaces across a project - whether the requirement is for low to high rise curtain walling, and ribbon, structural, beaded and sloped glazing.

Excellence in façade design

MX has all the aesthetic, durability and low maintenance qualities of aluminium, and combines innovative technology and construction features with advanced manufacturing techniques for quality installation and long-term performance.

The system is the result of Technal's ongoing product development programme and has been rigorously

tested to EN standards for wind resistance, water tightness and air permeability.

MX is fully compatible with Technal's portfolio of casement windows and doors, and can be used to create a wide variety of architectural compositions.

A complete range of design options

MX is a highly engineered façade system, which offers the widest choice of design options from a single grid:

- High to low rise curtain walling
- MX Visible Grid
- MX Trame for horizontal or vertical emphasis
- MX SSG structural sealant glazing
- MX SG structural glazing
- MX single glass
- MX BG beaded glazing
- MX Acoustic
- Sloped and faceted façades
- Atrium roofs
- Ribbon glazing
- Concealed vents.

GEODE

Innovative façade
technology



Key Features and innovations

- **Visual consistency.** Slim, constant 52mm sight lines for the mullion and transoms giving a uniform appearance across the MX suite.
- **Thermal efficiency.** Excellent thermal performance to achieve low U values.
- **Technically advanced framing system.** High quality components for long-term durability
- **Intelligent design.** Engineered for quality fabrication and installation.
- **Meeting individual project requirements.**
A choice of depths up to 240mm for the structural members, for design flexibility and to ensure cost efficiency.
- **Full system compatibility.**
Technal's TOPAZE casement windows, and doors, TITANE intensive use door and TOPAZE sliding systems can be used with MX curtain walling
- **Concealed vents.** There is the option of concealed opening vents in a variety of configurations.
- **Design detailing.** A range of shaped caps offer further design flexibility.
- **Choice of infills.** The system can carry glazing units.

Construction



- **Robust construction.** The mullions and transoms are square cut and assembled using a combination of factory-fitted cast face-fixed junction spigots and concealed anti-rotation spigots, or by transom blocks. This strong construction is easy to fabricate and allows greater accuracy and enhanced stability.
- **High quality construction.** The mullion jointing uses a specially designed sleeve spigot for each mullion for a high quality joint.
- **Cost efficiency.** All machine operations can be performed on drill jigs with punch tooling for drainage, to reduce fabrication time and cost, and achieve consistent quality.

Weather Performance

- **Enhanced weather resistance.** An innovative face-fixed spigot for each mullion and transom joint is designed to ensure the injection of sealant is minimised and precisely controlled for improved weatherproofing. Each individual drainage zone has a series of bespoke EPDM plugs between the isolators and pressure plates at each junction, preventing water ingress and removing the need for sealant for higher performance.
- **Efficient drainage.** The MX system has the additional advantage of secondary mullion drainage to further improve weather performance and quality. The system is zone drained and pressure equalised to ensure performance and drainage efficiency.
- **Interface detailing.** A PVC perimeter sealing profile ensures damp proofing at the building interface.



GEODE



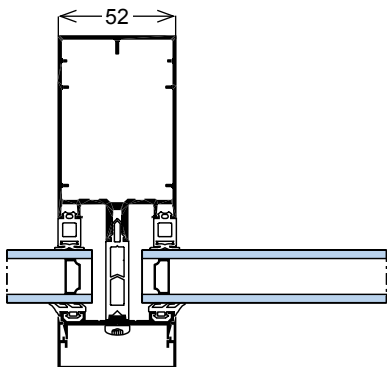
MX Visible Grid



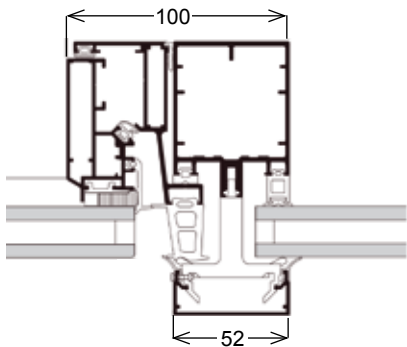
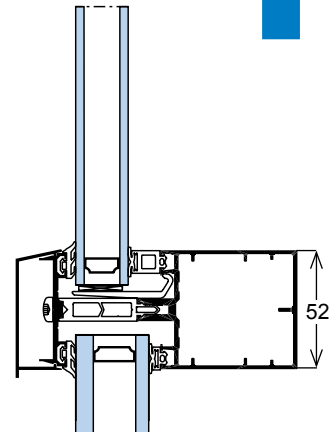
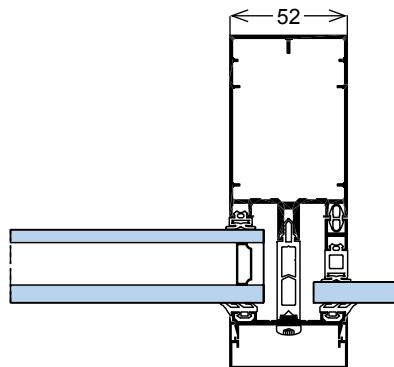
Key Features

- **Flat or faceted façades.** 6mm to 32mm glazing available as a flat façade or faceted up to 20°
- **Superior load distribution.** Less deflection across the transoms allows the system to hold large, heavy glazing units
- **Concealed vents.** Projecting top hung open-out, and tilt/turn concealed vents for natural ventilation whilst maintaining an uninterrupted flat façade
- **Choice of glazing gaskets.** Available as over-sized vulcanised corners or linear supply to suit project requirements
- **Larger glass sizes.** MX62 is an option for the vertical façade, which allows specifiers to use a 62mm module for larger glass sizes, maximising natural light.
- **Additional acoustic performance.** MX Acoustic is another option for MX Visible Grid for projects requiring further acoustic protection with 42mm glazing.
- **For tempered areas.** MX single glass is an optimized option for geographic areas which do not need double glazing.





A MX Visible Grid



B MX open-out concealed vent

Construction

- Facilitating fabrication. The mullions and transoms are square cut and assembled using a combination of cast face-fixed junction spigots and concealed anti-rotation spigots for ease of fabrication*
- Faceted façades. The faceted glazing option uses a standard cast face-fixed spigot for a facet of $\pm 10^\circ$, and a transom block with specially designed pressure plates, caps and adaptors for 10° to 20° facets*
- Specification option. There is also the option of transom blocks as an alternative to anti-rotation spigots to meet design and project requirements.*

Weather Performance

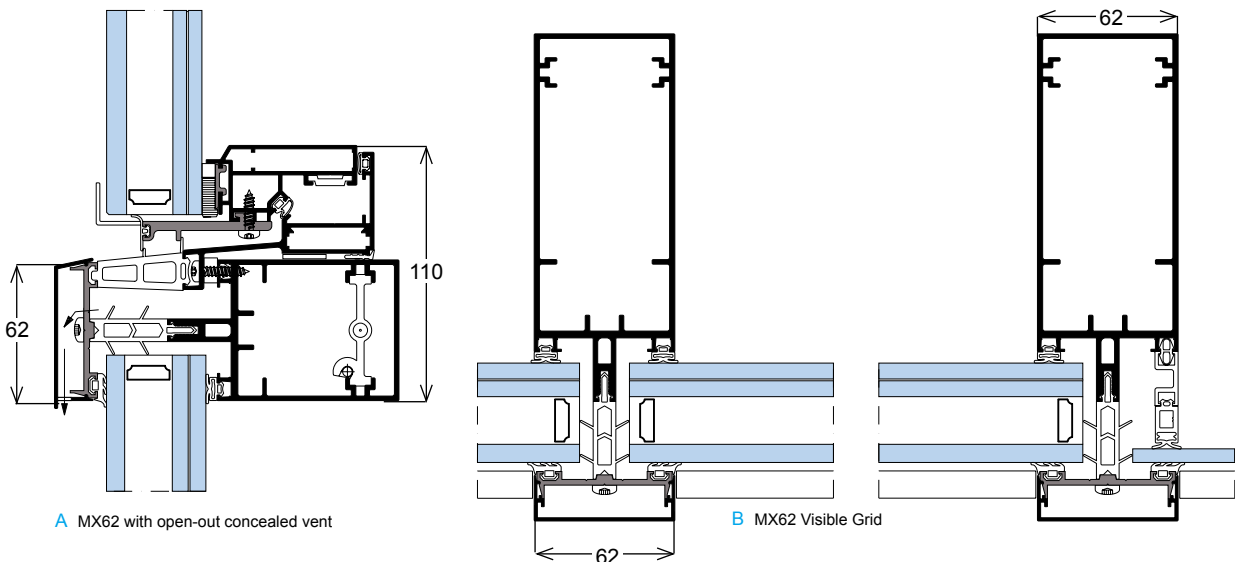
- Enhanced thermal performance. The standard MX Visible Grid system is thermally isolated using a 34mm TPE thermal break between the pressure plate and mullion or transom. This ensures superior thermal efficiency to meet or exceed the required Building Regulations
- Effective drainage. A pressure plate holds the infill in place with a combination of EPDM gaskets and allows for zone drainage with pressure equalisation using punched slots into the pressure plates and caps.

Note: *refer to MX62 construction details.

GEODE



MX62



A MX62 with open-out concealed vent

B MX62 Visible Grid

Key Features

- **Larger glass dimensions.** MX62 gives specifiers the option of a 62mm module for the MX Visible Grid vertical façade to allow glazed units in larger sizes to be accommodated, maximising natural light.
- **Loadings.** The maximum weight is **600 kg per transom** where the half perimeter is between 5m and 7m.
- **Profile options.** MX62 is available in three mullion/transom sizes - 80mm, 140mm, and 200mm boxes
- **Simple application.** This design option uses one pressure plate, one horizontal and one vertical cap, and will accommodate **8mm to 44mm glazing** as a flat façade.
- **Concealed vent options.** Structurally bonded top hung concealed vents can be supplied for 36mm

and 42mm glazing.

- **Additional reinforcement.** There is also the option of steel reinforcements to further strengthen the curtain wall.
- **System compatibility.** Insert profiles will allow the Technal commercial door systems and casement windows to be incorporated in the curtain wall grid.

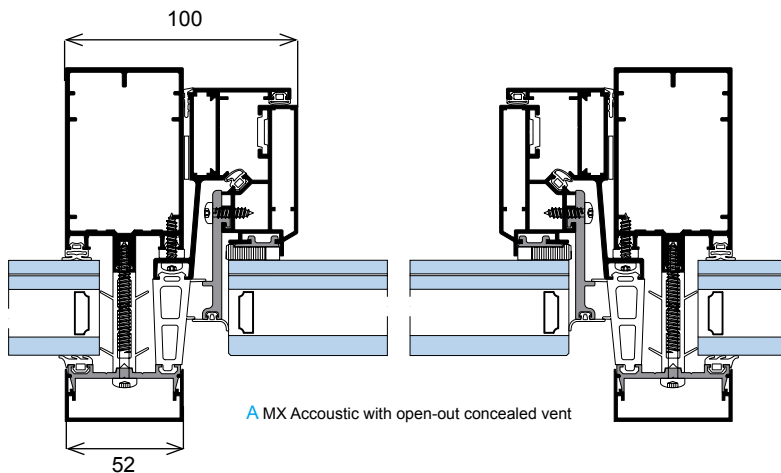
Construction

- Aluminium sleeves are used as on the standard MX Visible Grid system.
- The transoms are spigot-fixed and accommodate the infill of 8mm to 44mm, with a **maximum weight of 600 kg/transom.**

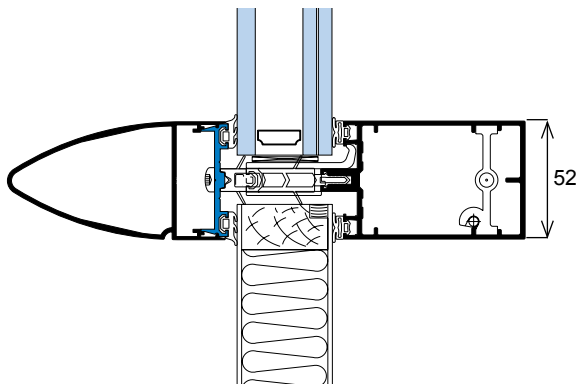
GEODE



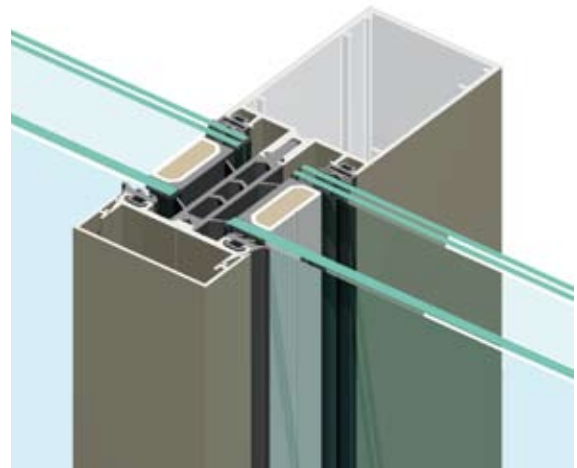
MX Acoustic



A MX Acoustic with open-out concealed vent



B MX Acoustic Trame Horizontale



Key Features

- **Additional noise protection.** MX Acoustic is an option for both **MX Visible Grid** and **MX Trame Horizontale** for applications where additional acoustic performance is required, such as city centre apartments, hospitals, student accommodation and buildings near airports and railway lines
- **Flat and faceted façades.** A 32mm to 42mm infill will improve acoustic performance for vertical façades, available as a flat façade or faceted up to $\pm 20^\circ$ for MX Visible Grid and a facet of up to $\pm 10^\circ$ for MX Trame Horizontale
- **Concealed vent options.** Structurally bonded top hung concealed vents can be supplied for 36mm and 42mm glazing
- **System compatibility.** Insert profiles will allow the Technal door systems and casement windows to be incorporated in the curtain wall grid.

Construction

- The transoms can be spigot-fixed or block-mounted to accommodate the 32mm to 42mm infill, with a **maximum weight of 240 kg/transom.**

GEODE



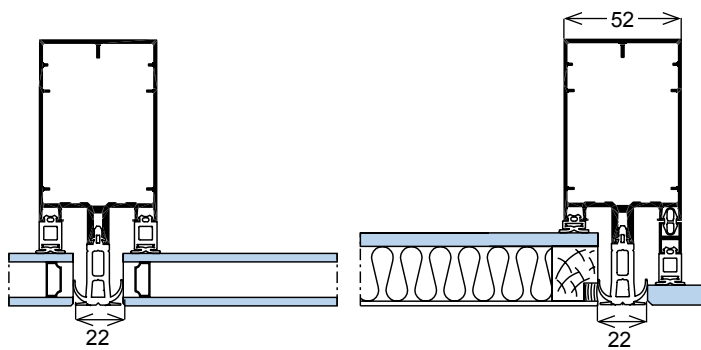
MX Trame



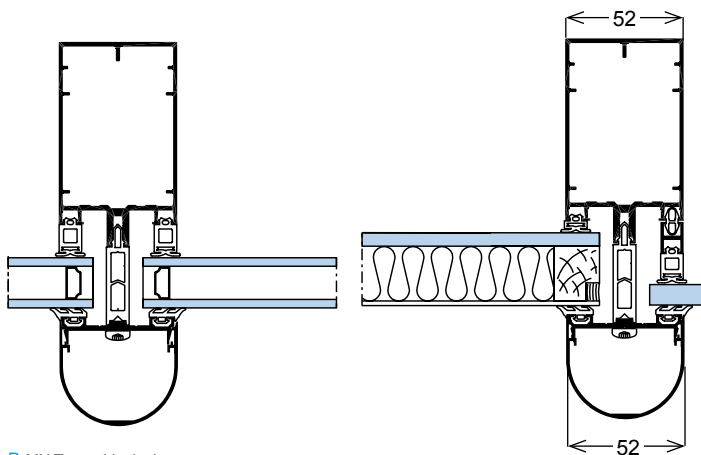
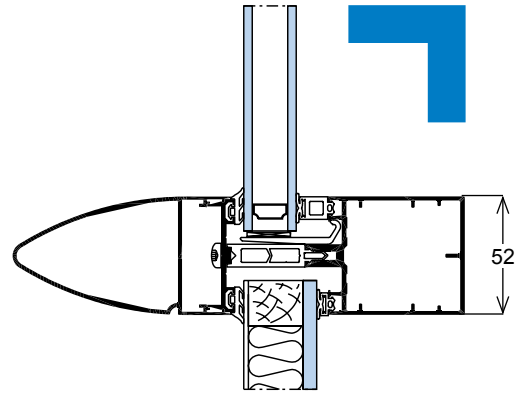
Key Features

- **Distinctive design detailing.** MX Trame is a further design option, allowing specifiers to **highlight the vertical or horizontal profiles** across the building envelope.
- **Glazing and vent options.** MX Trame Horizontale can accommodate **6mm to 32mm glazing** as a flat façade or faceted up to 10°. The concealed vent configurations are top hung open-out or tilt/turn. MX Trame Verticale can carry 6mm to 32mm glazed units as a flat façade. Concealed vent options are top hung or tilt/turn.

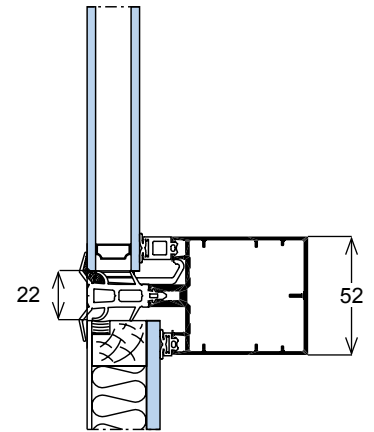




A MX Trame Horizontale



B MX Trame Verticale



- **Reducing deflection.** On larger mullion or transom spans, the glass deflection is reduced using a centrally fitted pressure block.
- **Additional acoustic protection.** MX Acoustic is an option for MX Trame Horizontale for applications where further acoustic performance is required.

Construction

- **Pioneering design.** Projecting aerofoil transom caps add depth to the façade whilst slender face trim gaskets, which are flush with the front face of the infill, soften the corresponding vertical or horizontal sections.
- **Dry glazed.** The MX Trame system is dry glazed, removing the need for site-applied sealant.

Weather Performance

- **Weather resistant design.** A pressure plate on the mullion or transom holds the infill in place with a combination of EPDM gaskets and allows for zone drainage with pressure equalisation through punched slots into the pressure plates and caps
- **Thermal efficiency.** MX Trame is thermally isolated using a 34mm TPE thermal break between the pressure plate and mullion or transom.

GEODE

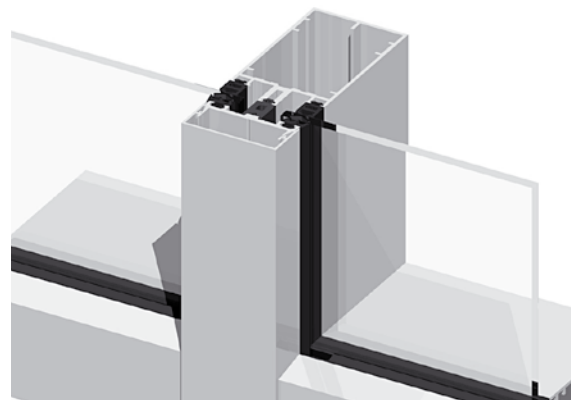


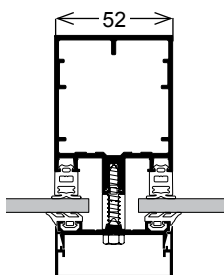
MX Single Glass



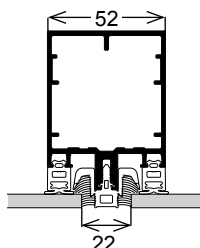
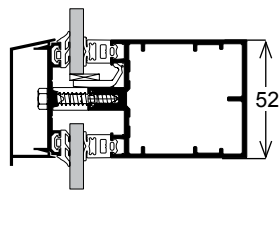
Key Features

- **Optimized version for tempered areas.** MX Single glass is an option for both MX Trame and grid mainly dedicated for geographic areas where climatic conditions doesn't impose high thermal performance and the use of double glazing.
- **Flat and faceted façades.** Single laminated glass from **6mm to 11mm** available as a flat façade or faceted up to 10°.
- **Concealed vent option.** Structurally bonded top-hung concealed vents can be supplied for 6mm to 11mm glazing.
- **System compatibility.** MX single Glass will allow the Technal door systems and casement windows to be incorporated in the curtain wall grid.

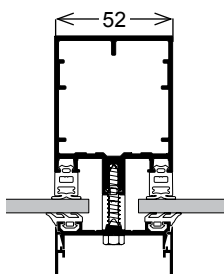
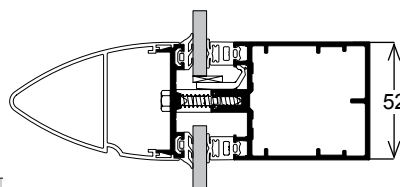




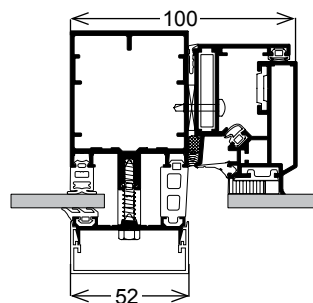
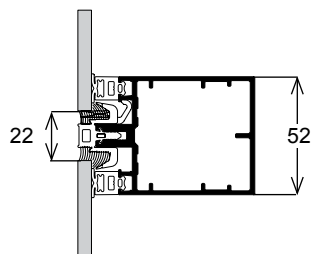
A MX single glass Visible Grid



B MX single glass Horizontal Trame



C MX single glass Vertical Trame



D MX single glass with open-out concealed vent



Construction

- The internal structure and exterior caps are used as on the standard MX Visible Grid.
- Possibility to limit the glass deflection on free side glass by a punctual piece.

GEODE



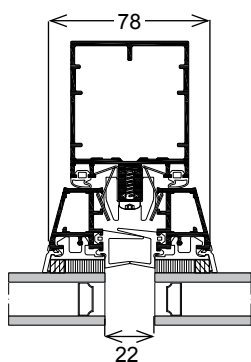
MX SSG

Structural Sealant Glazing

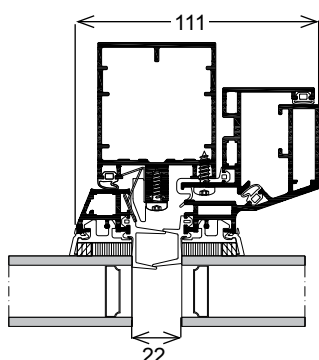


Key Features

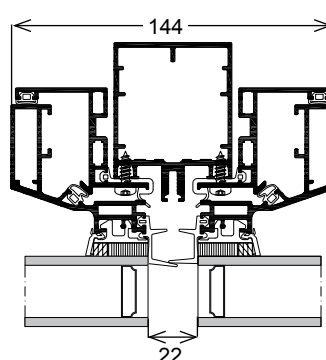
- **Less visible aluminium.** MX SSG responds to the demand to create flush glass façades with visibly less aluminium. The glazed units are bonded onto the carrier frame with one or two-part silicone.
- **Ease of specification and installation.** MX SSG uses the same grid system as MX BG beaded glazing, MX Trame and MX Visible Grid, allowing specifiers to vary the aesthetics of the building envelope without the need for additional interface detailing and construction.
- **Reassuring quality.** The system is manufactured in controlled factory conditions by an approved bonding specialist to certified standards.
- **Patented design.** A patented 'hook and toggle' system facilitates installation.
- **Weather performance.** The external edges of the glazed units are arised and a 2mm step to the outer pane allows standing water to drain away for improved weather performance.
- **Bespoke gasket.** A specially designed EPDM perimeter frame gasket is fitted to every frame.
- **Glazed units and infills.** MX SSG can accommodate 6mm, 23mm or 31mm structural sealant glazing.
- **Flat and faceted façades.** Available as a flat façade or faceted up to $\pm 5^\circ$.
- **Loadings.** The glass is supported by a glass security support at each corner of the carrier frame which allows a maximum glass weight of 200kg per frame.
- **Specification options.** A choice of fixed lights, top hung open-out and tilt/turn concealed vents and fireman access are available.



A MX SSG fixed frame



B MX SSG open-out concealed vent



Construction

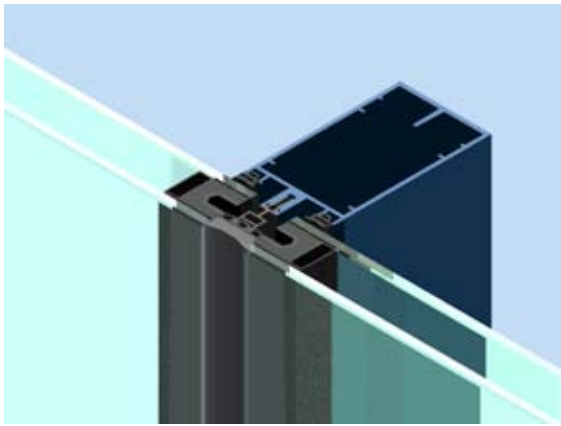
- Air tight construction. An EPDM internal compression gasket makes the system fully air tight. There is a choice of a frame gasket or over-sized vulcanised corners fitted on site
- Fast installation. Carrier frames are fitted onto the curtain wall grid using the 'hook and toggle' system
- Strong construction. The carrier frames are mitre jointed using an epoxy-bonded and mechanically crimped corner cleat for a robust construction.

GEODE



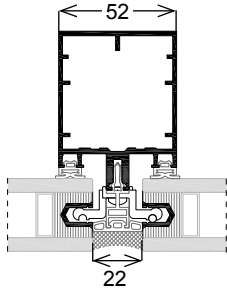
MX SG

Structural Glazing

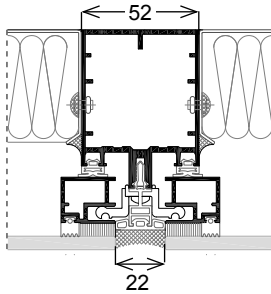
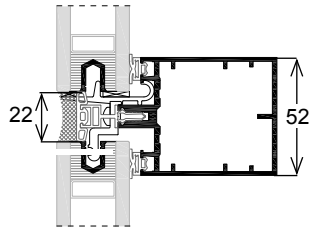


Key Features

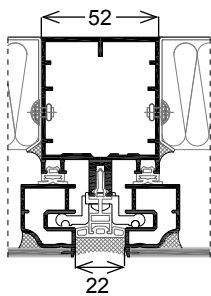
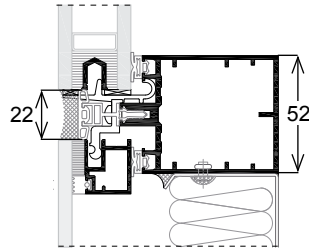
- **All glass effect.** MX SG glass is a technical option allowing the realization of flush glass façades without additional frames bonded on the glasses. The glazed units are mechanically fixed to the aluminium structure with aluminium brackets.
- **Glazing volumes.** The system requires for the vision fixed frames specific double-unit glass including a continuous U profile integrated between the 2 glasses inside the silicone chamber.
- **Glazed units and infills.** Fixed frames and openings with an infill of 36mm to 42mm for the vision parts. Spandrel panel with glasses of 6mm to 8mm and Aluminium Composite Panel of 4mm.
- **Simple and quick fabrication.** MX SG is an economical alternative to the traditional Structural Sealant Glazing for fixed parts.
 - Glazing directly fixed on the structure without intermediate frame
 - No sticking on aluminium profile (cost) and no time for drying (delivery time)
- **Weathering.** A wet sealant (silicone) is applied on a gasket between the glazing volumes.
- **System compatibility.** MX SG can be mixed with Visible Grid and Trame allowing specifiers to vary easily the aesthetic of the building envelop. Insert profiles will allow the Technal door systems to be incorporated in the curtain wall grid.
- **Flat or faceted.** Available as flat façade or faceted up to $\pm 5^\circ$.



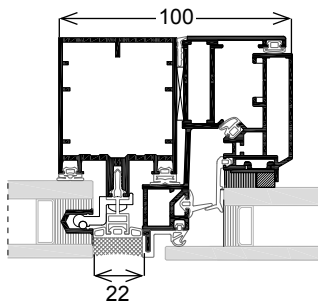
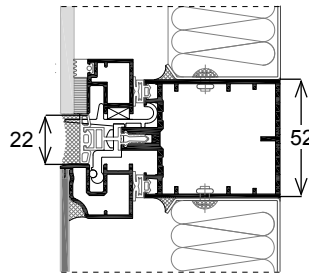
A MX SG



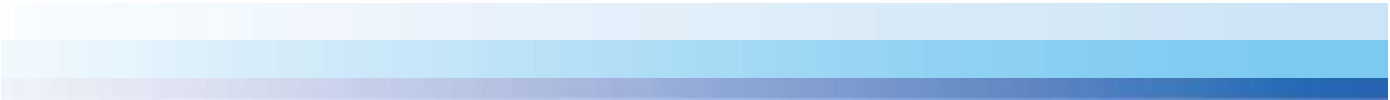
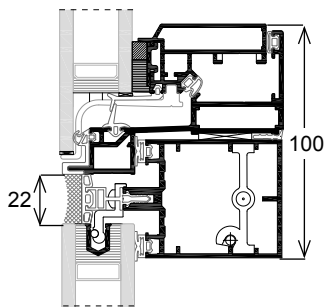
B MX SG single glass spandrel



C MX SG aluminium composite panel



D MX SG open-out concealed vent



GEODE



MX BG Beaded Glazing

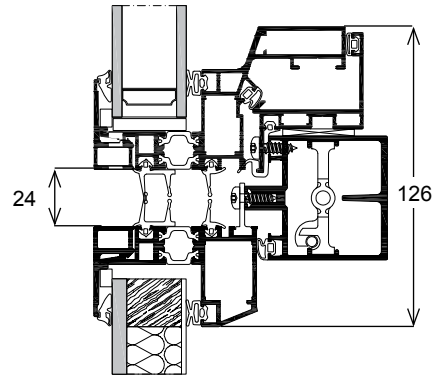
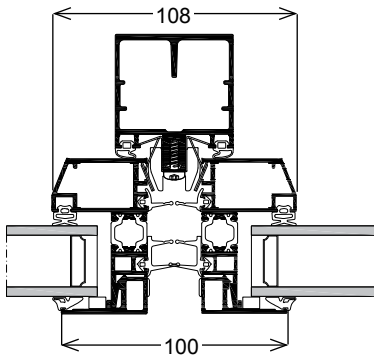


Key Features

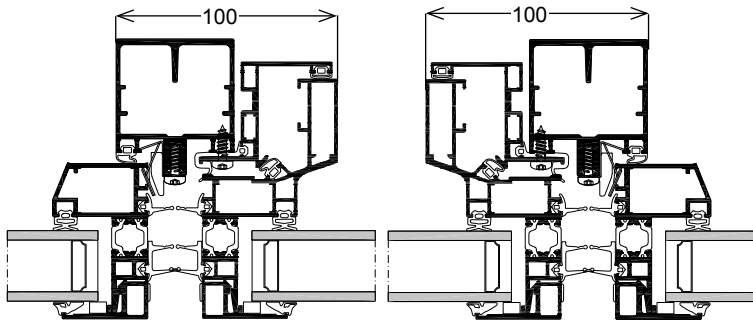
- **A contemporary alternative.** MX BG has an externally beaded frame option to create a 'picture frame' appearance across a façade.
- **System compatibility.** MX BG uses the same grid system as MX structural glazing, MX Trame and MX Visible Grid, allowing specifiers to vary the aesthetics of the building with keeping the same interior aesthetic.
- **Patented design.** A patented 'hook and toggle' system facilitates installation.
- **Dry glazing.** The system is dry glazed onto carrier frames in the factory.
- **Glazing options.** MX BG can carry 6mm to 32mm glazing.

- **Flat or faceted.** Available as a flat façade or faceted up to $\pm 5^\circ$.
- **Externally glazed.** The top and bottom beads are pop-riveted to the fixed frame for additional security.
- **Specification options.** A choice of fixed lights, top hung open-out tilt/turn concealed vents and fireman access are available.
- **Façade CE marking.** The MX BG façade succeeded in tests and is approved by façade CE marking.





A MX BG fixed frame



B MX BG open-out concealed vent

Construction

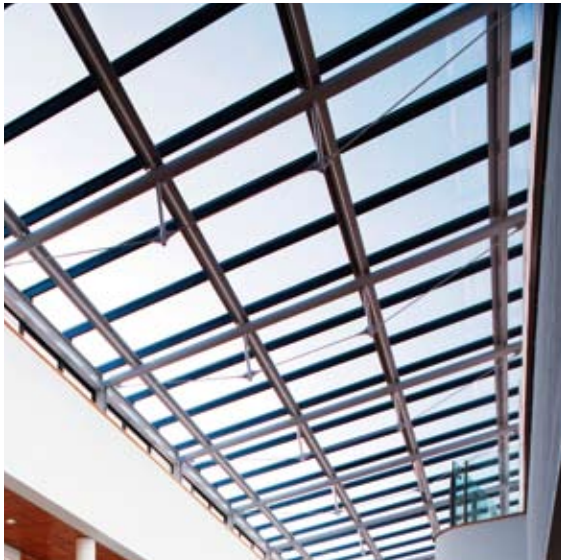
- Air tight construction. An EPDM internal compression gasket makes the system fully air tight. There is a choice of a frame gasket or over-sized vulcanised corners fitted on site.
- Strong construction. The carrier frames are mitre jointed using an epoxy-bonded and mechanically crimped corner cleat for a robust construction.
- Fast installation. Carrier frames are fitted onto the curtain wall grid using the 'hook and toggle' system.



GEODE



MX Sloped Glazing



Key Features

- **Design options.** The MX system allows sloped glazing to be created in **MX Visible Grid** or **MX Trame Verticale**.
- **Uniform appearance.** These options give specifiers the flexibility to construct sloped roofs, atria, canopies, valleys and pyramids, which are fully compatible and visually consistent with the vertical façade.

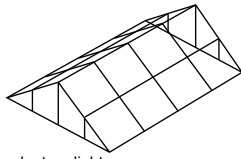
MX Visible Grid:

- **Specially designed capping.** A special transom cap for the horizontal and vertical profiles reduces the collection of water on the slope.

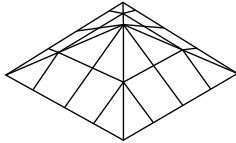
MX Trame Verticale:

- **Minimising deflection.** There are vertical caps and silicone sealant on the transom with pressure blocks to prevent deflection of the glass under negative wind load pressure.
- **Glazing units.** The double glazed units are manufactured using structural silicone sealant.
- **Incline options.** A minimum slope is available of 10° for single glazed units and 15° for double glazing.

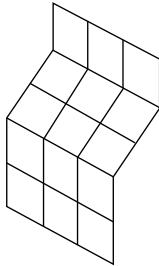
Applications



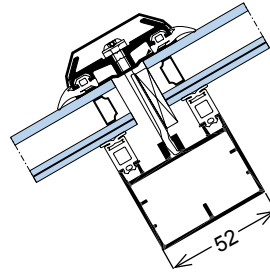
lantern light



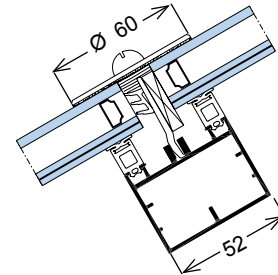
Pyramid



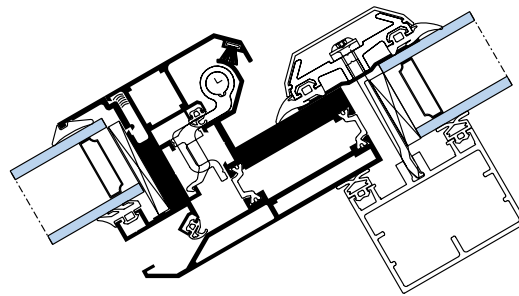
Skylight



A MX Sloped Visible Grid



B MX Sloped Trame Verticale



C MX roof vent

Construction

- The 8mm to 32mm infill is held by horizontal and vertical pressure plates for the MX Visible Grid system and by vertical pressure plates and horizontal pressure blocks for MX Trame Verticale
- Construction detailing. The rafters and transoms are square cut and assembled using a penetrating transom principle.

Weather Performance

- Effective drainage. Drainage is achieved from the transom ends through the rafters
- Weather resistance. The grid system is glazed with an EPDM gasket to the inside and butyl tape to the outside. MX Trame Verticale has an infill gasket and silicone on the transoms.

GEODE

Design Specifications

Weather Performance

A sample façade for each of the following systems was tested in accordance with NF standards, meeting the requirements of EN 13830 Specification

for Curtain Walling. MX also meets the requirements of the CWCT Standard for building envelopes. Further details are available on request.

	Air Permeability	Static Water Tightness	Dynamic Water Tightness	Wind Resistance	Safety
MX Visible Grid, MX Trame, concealed open-out vent	<4m ³ /h/m ² at +1200Pa; 4m ³ /h/m ² at -900Pa (A*4) (Vent A*3)	Pass 1200Pa (E*E 1200)	-	Pass +2400Pa -1700Pa (V*C5)	-
MX62 Visible Grid, concealed open-out vent	A4	0.2m ³ /h/m ² at 600Pa (A*4) (Wind A*4)	-	Pass 2400Pa	-
MX Acoustic Grid, concealed open-out vent	A4	Pass 1200Pa (E1200)	-	Pass 2400Pa	-
MX Acoustic Trame Horizontale, concealed open-out vent	A4	Pass 750Pa (E750)	-	Pass 1800Pa	-
MX SSG/MX BG, concealed open-out vent	0.2m ³ /h/m ² at 600Pa (A*4) (Wind A*4)	Pass 600Pa (E*9A)	Pass 15 minutes at 600Pa	Pass 2400Pa (E*E2400)	Pass 3600Pa (E*E3600)
MX SSG/ MX BG, tilt/turn vent	Pass A*4	Pass E*E1200	-	Pass E*C5	-
Roof vent (BS EN 12207, 122008 & 12210)	A3	E7B (slope 5°)	-	VA3	-
MX Single Glass, visible grid	AE	RE1650	-	Pass 1200 Pa	-
MX Single Glass Trame horizontale	AE	RE900	-	Pass 1200 Pa	-
MX Single Glass, concealed open-out vent	A4	E1200		C2	



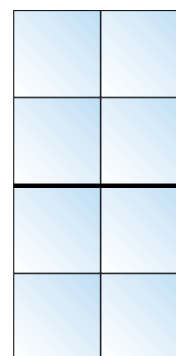
Thermal performance

The precise performance will depend on a combination of frame size, glazing thickness, type of infill and the option specified. Indicative values are shown below as a guide. Further details are available on request.

Façade U-values W/m²K

Two frames per floor: W=1.35m x H = (1.50 + 1.50)m. 100% glazed

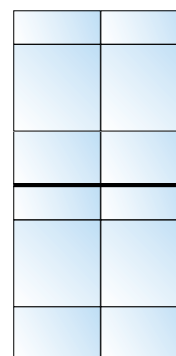
U-value Glass W/m ² K									
	1.1	1.2	1.3	1.4	1.5	1.7	1.9	2.1	2.3
Visible Grid*	1.5	1.6	1.7	1.8	1.9	2.0	2.2	2.4	2.6
Trame*	1.5	1.6	1.7	1.8	1.9	2.1	2.2	2.4	2.6
MX SSG	1.8	1.8	1.9	2.0	2.1	2.3	2.4	2.6	2.8
MX BG*	1.7	1.8	1.9	2.0	2.1	2.2	2.4	2.5	2.7



*32mm double glazed unit

Three frames per floor: W=1.35m x H top frame = 0.85m x H middle frame = 1.50m x H bottom frame = 1.00m. 100% glazed

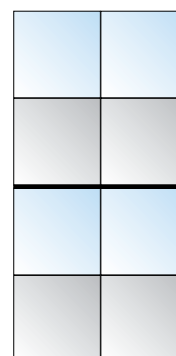
U-value Glass W/m ² K									
	1.1	1.2	1.3	1.4	1.5	1.7	1.9	2.1	2.3
Visible Grid*	1.6	1.7	1.8	1.8	1.9	2.1	2.3	2.4	2.6
Trame*	1.6	1.7	1.8	1.9	1.9	2.1	2.3	2.5	2.6
MX SSG*	1.9	2.0	2.1	2.2	2.3	2.4	2.6	2.7	2.9
MX BG*	1.8	1.9	2.0	2.0	2.1	2.3	2.4	2.6	2.8



*32mm double glazed unit

Two frames per floor: W=1.35m x H top frame = 1.50m x H bottom frame + slab = 1.70m. 75% glazed, 25% panelled

U-value Glass W/m ² K									
	0.6	0.7	0.8	0.9	1.0	1.1	1.2	1.3	1.4
MX Acoustic	1.1	1.1	1.2	1.2	1.3	1.3	1.4	1.4	1.4
MX62*	1.1	1.1	1.2	1.2	1.3	1.3	1.4	1.4	1.4



*30mm insulated glass panel with polystyrene core U_p = 0.85, fixed light. 75% glazed + 25% panelled

Size and weight limitations

Option	Maximum Weight	Maximum Size - Subject to design
Transom assembled with face-fixed and anti-rotation spigots	400 kg	To be advised
Transom, block mounted	300 kg	To be advised
MX62	600 kg	To be advised
MX Acoustic	240 kg	To be advised
MX SSG/MX BG frame	200 kg	To be advised
Sloped frame	As design calculations	To be advised
MX Structural Glazing	400 kg	To be advised

Top hung open-out concealed vent	120 kg	1500mm w x 1750mm h 1000mm w x 2000mm h
Tilt/turn or side hung open-in concealed vent	100 kg	1500mm w x 2000mm h (double glazed)
Roof vent	60 kg	1500mm w x 1500mm h

Materials and components

As with all Technal façade systems, only the highest quality materials and components are used for the MX system for low maintenance and performance over time:

- Aluminium profiles are extruded from alloys 6005 T6, 6063 T6 or 6060 T5 to EN 12020, EN 573-3, EN 515 and EN 775-1 to 9
- Accessories are cast from Zamak 5 or A-S9G03 to EN 12844
- All frame gaskets are structural silicone certifiably compatible EPDM
- Polyamide thermal breaks are extruded from PA6-6 (0.25 FV)
- Screws are austenitic stainless steel.

Finishes and colours

A wide range of finishes is available for the MX curtain walling suite to meet individual project requirements, complement existing buildings and offer additional design freedom for architects and specifiers:

- Natural anodised in accordance with EN 12373-1:2001
- Stoved polyester powder coated finishes in a wide palette of colours and in accordance with "QUALICOAT" instructions
- The MX system is also available in Technal's exclusive flecked gloss Cendré polyester powder coated colours for a stylish and contemporary appearance.



Summary of design options

	Infill	Facet	Concealed Vent
MX Visible Grid	6mm to 32mm	Up to 20°	Concealed top hung, side hung, open-in tilt/turn; 23mm and 31mm glazing
MX62	8mm to 44mm	Flat	Concealed top hung; 36mm and 42mm glazing
MX Trame Horizontale	6mm to 32mm	Up to 10°	Concealed top hung, side hung, open-in tilt/turn; 23mm and 31mm glazing
MX Trame Verticale	6mm to 32mm	Flat	Concealed top hung, side hung, open-in tilt/turn; 23mm and 31mm glazing
MX Acoustic	32mm to 42mm	MX Visible Grid - up to 20°, MX Trame Horizontale - up to 10°	Concealed top hung; 36mm and 42mm glazing
MX Structural Sealant Glazing	6mm, 23mm, 31mm structural glazing; up to 60mm insulated panel with 6mm glazing	Up to 5°	Concealed top hung, side hung, open-in tilt/turn; 23mm and 31mm glazing
MX Beaded Glazing	6mm to 32mm (externally beaded, dry glazed)	Up to 5°	Concealed top hung 6mm to 32mm glazing beaded, side hung, open-in tilt/turn; 23mm and 31mm glazing
MX Sloped Glazing	8mm to 32mm	Minimum slope 15°, maximum slope 75°	Concealed to inside, open-out; 6mm to 30mm glazing
MX Structural Glazing	6mm, 8mm, spandrel 32mm, 34mm vision 4mm ACP	Up to 5°	Concealed top-hung 32mm glazing
MX Single Glass	6mm to 11mm	Up to 10°	Concealed top-hung 6mm to 11mm glazing



Hydro Building Systems International • 270 rue Leon Joulin • B.P.63709 • 31037 Toulouse cedex 1
T 00 33 (0)561 312 626 • F 00 33 (0)561 312 600 • www.technal-int.com

Technal is a Hydro brand

